

**HCLTech** | CloudSMART

HCLTech's cognitive  
infrastructure  
solutions powered by  
**IBM watsonx**



Platinum Partner

## Scaling GenAI solutions with IBM watsonx and HCLTech

Generative AI (GenAI) has become a powerful tool for businesses, transforming their operations across various functions. From enhancing customer interactions to boosting knowledge worker productivity, GenAI can deliver significant benefits. It can automate content creation, personalize experiences at scale and more.

HCLTech's Cognitive Infrastructure solutions, powered by IBM watsonx, takes a comprehensive approach to integrating GenAI across industries and business functions. This solution prioritizes innovation while adhering to a responsible and ethical AI framework. It ensures data privacy, protects intellectual property, promotes fair and unbiased outcomes and verifies the factual accuracy of generated content.

### HCLTech's cognitive IT expertise

#### AI advisory services



Collaborative workshop with IBM aimed at comprehending the customer's specific use case and recommending the most effective approach and methodology



Evaluate the current infrastructure capabilities and design a roadmap for transitioning toward a cognitive IT infrastructure



Cognitive infrastructure deployment approaches



Buy vs. build decisions

### How GenAI is reshaping enterprises and the global economy

**80%** productivity boost

Gartner anticipates an 80% improvement across various classes of knowledge workers and creative tasks, driven by the integration of GenAI.

**80%** of enterprises embrace integration

Gartner predicts that by 2026, 80% of enterprises worldwide will have seamlessly incorporated generative AI into their core business processes.

**70%** prioritize ethical use

Gartner forecasts that by 2025, 70% of enterprises will prioritize the sustainable and ethical utilization of AI technologies, reflecting a growing emphasis on responsible innovation.

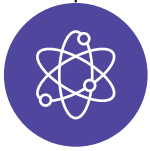
**\$3-4** trillion economic benefits

McKinsey projects an astounding forecast of \$3-4 trillion in economic benefits annually to the global economy through the adoption of GenAI.

## Platform and infrastructure build



Building new cognitive IT infrastructure or expanding the existing landscape based on specific use cases and requirements



Building and deploying AI platform of choice, enabling customers to embrace GenAI at scale

## Operate and managed services



Onsite/offsite support for cognitive infrastructure life cycle management



GenAI platform management



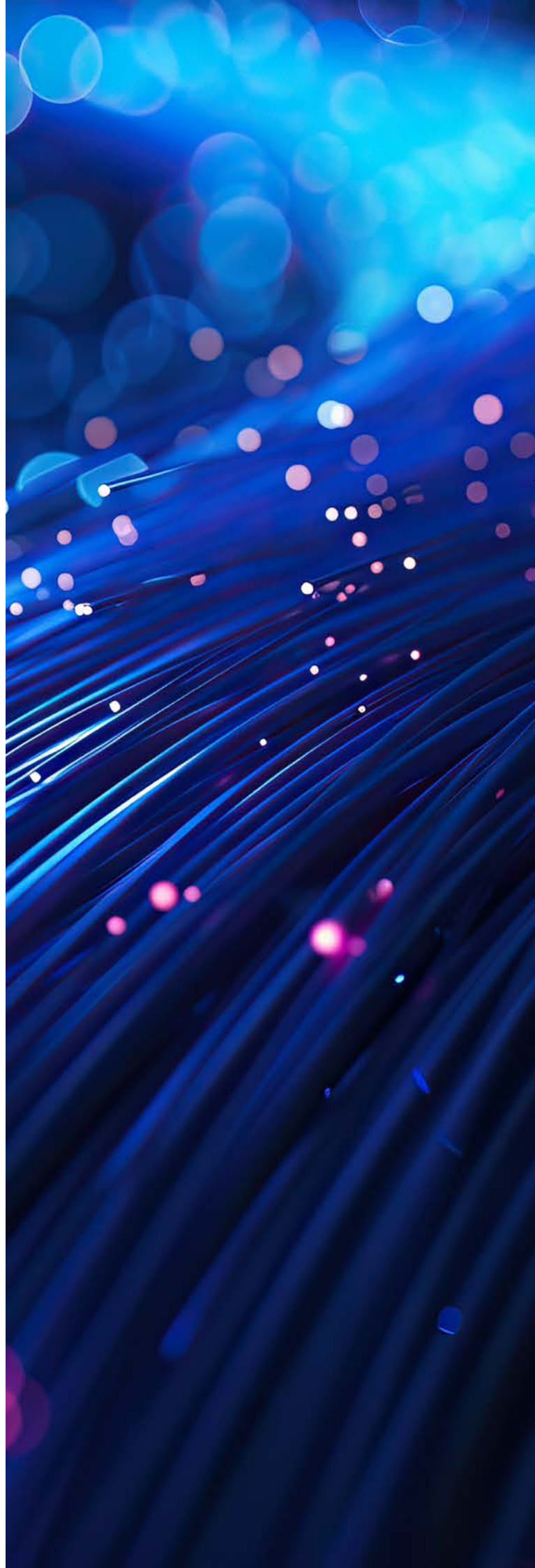
Availability and performance monitoring



MLOps and observability



Unified IT infrastructure, cloud monitoring and observability



## Empowering enterprises to become AI-native

HCLTech Cognitive Infrastructure solutions and IBM watsonx bring together the best-of-breed solutions empower businesses to become AI-native. IBM watsonx offers a versatile and scalable MLOps/LLMOps platform equipped with the tools to build, deploy and manage AI-powered applications.

This collaboration prioritizes key watsonx initiatives, enabling customers to adopt GenAI and Traditional AI at scale across hybrid and multicloud deployments. By harnessing the complete IBM watsonx stack, including watsonx.ai, watsonx.data and watsonx.governance, enterprises gain comprehensive support to propel their AI journey forward.

### watsonx.ai

It offers a comprehensive range of pre-trained, developed-for-the-enterprise AI models (open source and with IBM) that are ready for production-grade use

### watsonx.data

IBM's approach to a data lakehouse architecture combines the best of IBM with the best of open source

### watsonx.governance

It helps enterprises scale artificial intelligence responsibly with end-to-end AI lifecycle governance built to detect and mitigate risk and meet growing ethical, legal and regulatory concerns



HCLTech offers extensive experience in building, deploying and managing cognitive infrastructure solutions. Our expertise empowers the AI teams to navigate the intricacies and costs of developing ML models. Additionally, HCLTech's security framework addresses security challenges when implementing GenAI across all layers of cognitive infrastructure. This framework aligns with the principles of Responsible AI, ensuring the development, evaluation and deployment of AI systems in a secure, reliable and ethical manner.

## HCLTech's AI framework on IBM watsonx

Combining IBM watsonx's capabilities with HCLTech's AI framework and service delivery model can offer a comprehensive suite of AI solutions and services. Here's what businesses can expect:



- End-to-end AI services for GenAI – from discovery to deployment and beyond
- Faster production for AI-enabled apps
- An upstream open-source and commercial technology partner tool
- An out-of-the-box offering for enterprises of all sizes
- A system tuned for edge or data center deployments
- An ultra-scalable architecture for greater Large Language Models (LLM) performance

### Key solution benefits

- Enhanced efficiency
- Scalability
- Flexibility
- Improved data management
- Accelerated innovation
- Enhanced governance and compliance
- Reduced costs

## Stronger together: HCLTech and IBM watsonx for the next era of AI

HCLTech is at the forefront of empowering enterprises to harness the transformative power of artificial intelligence, utilizing the advanced capabilities offered by IBM watsonx. This robust AI platform addresses the common challenges that impede AI adoption. As a testament to our commitment, HCLTech is launching an extensive skills development program to certify more than 10,000 engineers and architects in IBM's cutting-edge AI technologies, specifically watsonx, ensuring a skilled workforce for the future of AI.

We are pivotal in paving the way for the adoption of GenAI across industries. By enabling businesses to integrate advanced technologies and leverage the latest business and technology insights, we are driving continuous innovation. Our efforts are not solely focused on technology adoption but also on fostering a culture of innovation and growth in the industries we serve.

## Why HCLTech

HCLTech is positioned as leader in the 2023 Gartner® Magic Quadrant™ for Data Center Outsourcing and Hybrid Infrastructure Managed Services, Worldwide

Over 100 GenAI use cases

HCLTech is rated as a Leader in ISG Provider Lens™ - Analytics Services, U.S. 2023

Faster time-to-market through cloud-native GenAI labs, IPs and frameworks

HCLTech is recognized with a Customers' Choice distinction in the 2023 Gartner® Voice of the Customer report for Data Center Outsourcing and Hybrid Infrastructure Managed Services, Worldwide

Pool of AI engineers, data scientists and infrastructure platform SME



**HCLTech** | Supercharging  
Progress™

[hcltech.com](https://hcltech.com)