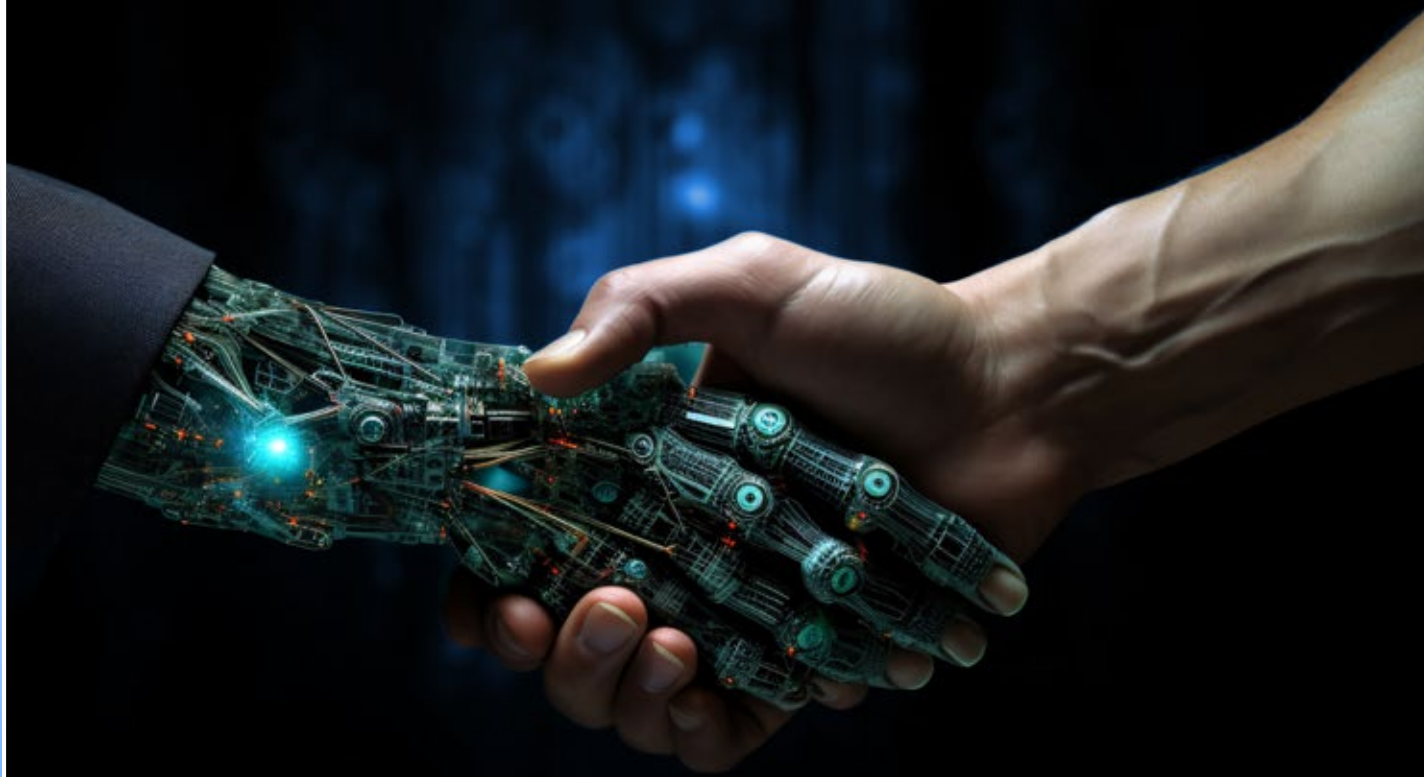


Cognitive Infrastructure Services powered by HPE

Enabling Generative AI adoption at scale,
by leveraging HCLTech and HPE's capabilities



At HCLTech, we understand that GenAI is everywhere, disrupting every industry and opening unlimited possibilities for organizations of every size. Today's enterprises need AI solutions that can turn questions into discovery, insights into action and imagination into reality. To help enterprises harness the value of massive amounts of varied, distributed data sets, HCLTech has partnered with HPE to deliver enterprise-class cognitive infra services and solutions.

Market view

\$3T - \$4T

Forecasted economic benefits from GenAI on the global economy annually

Source: McKinsey

80%

Enterprises will have incorporated GenAI into their business processes by 2026

Source: Gartner

80%

Productivity gains expected across classes of knowledge workers and creative tasks

Source: Gartner

70%

Enterprises will identify the sustainable and ethical use of AI among their top concerns by 2025

Source: Gartner

Cognitive Infrastructure Services portfolio



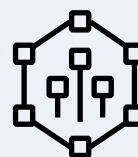
AI advisory services

- Collaborative workshop with HPE aimed at comprehending the customer's specific use case and recommending the most effective approach and methodology
- Evaluate the current infrastructure capabilities and design a roadmap for transitioning towards cognitive IT infrastructure
- Cognitive infra deployment approaches
- Buy vs. build decisions



Platform and infrastructure build

- Building new cognitive IT infrastructure or expanding the existing landscape based on the specific use cases and requirements
- Building and deploying GenAI platform of choice enabling customers to embrace GenAI at scale



Operate and managed services

- Onsite/offsite support for cognitive infrastructure life cycle management
- GenAI platform management
- Availability and performance monitoring
- MLOPS and observability
- Unified IT infrastructure and cloud monitoring and observability

Future-focused cognitive infrastructure systems from HCLTech and HPE


HCLTech, with HPE, is helping enterprises achieve their goal of becoming AI-native by leveraging a cognitive infrastructure stack comprising HPE Cray systems, HPE ProLiant servers with GPU accelerators and software solutions like the HPE ML Development System and ML Data Management System.


HCLTech has developed expertise in constructing, deploying and managing the mentioned cognitive infrastructure solutions.


These solutions will empower enterprise AI teams to navigate the intricacies and expenses linked to ML model development.


The HCLTech security framework TRiBE mitigates the security challenges that they face while adopting GenAI across every layer of cognitive infrastructure, thus complementing the principles of responsible AI, i.e., developing, assessing and deploying AI systems in a safe, trustworthy and ethical way.


With HPE AI solutions backed by HCLTech's AI Framework, solutions and service delivery model, enterprises can expect:

- 

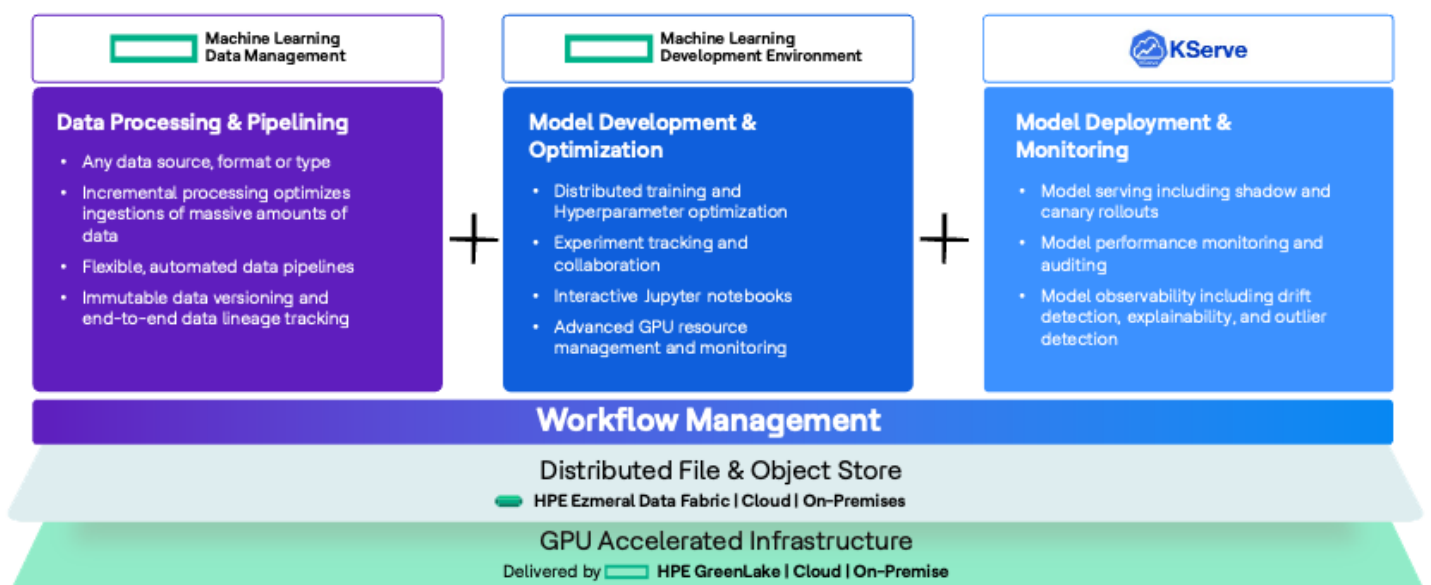
End-to-end AI services for GenAI – from discovery to deployment and beyond
- 

NVIDIA GPU-enabled applications for faster AI outcomes
- 

Ultra-scalable architecture for greater large language model (LLM) performance
- 

An out-of-the-box offering for enterprises of all sizes
- 

A system tuned for edge or data center deployments



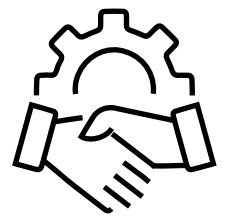


Key benefits

- Implementing responsible AI for enterprises across the full lifecycle
- Accelerates time to value for AI model developers
- It quickens time to market by increasing productivity significantly
- Reduces infrastructure complexity and the cost of model development and training at scale
- Lowers the operational difficulties of deploying and managing an AI infrastructure utilizing HCLTech accelerators and IPs

Better together

HCLTech and HPE for the next era of AI



For more than 30 years, HCLTech and HPE have been driving innovation together. Our combined experience in AI, HPC, converged infrastructure, virtualization and hybrid cloud allows our customers to build for the future on an integrated, scalable and automated IT platform.

HCLTech and HPE work together to make IT environments more efficient and secure from

edge to cloud, ensuring fast responses to a rapidly changing landscape without sacrificing privacy, performance or control. Whatever the size of your organization, HCLTech and HPE can help you transform from traditional technology platforms to a supercomputing environment designed for the next era of AI and beyond.

Why HCLTech



HCLTech positioned as a Leader in the 2023 Gartner® Magic Quadrant™ for Data Center Outsourcing and Hybrid Infrastructure Managed Services, Worldwide.



HCLTech is rated as a Leader in ISG Provider Lens™ – Analytics Services, U.S. 2023



HCLTech is recognized with a Customers' Choice distinction in the 2023 Gartner® Voice of the Customer report for Data Center Outsourcing and Hybrid Infrastructure Managed Services, Worldwide



100+ GenAI use cases



Faster time-to-market through cloud native GenAI labs, IPs and frameworks



Large pool of AI engineers, data scientist and infra platform SMEs

HCLTech | Supercharging Progress™

HCLTech is a global technology company, home to more than 227,000 people across 60 countries, delivering industry-leading capabilities centered around digital, engineering, cloud and AI, powered by a broad portfolio of technology services and products. We work with clients across all major verticals, providing industry solutions for Financial Services, Manufacturing, Life Sciences and Healthcare, Technology and Services, Telecom and Media, Retail and CPG and Public Services. Consolidated revenues as of 12 months ending March 2024 totaled \$13.3 billion. To learn how we can supercharge progress for you, visit hcltech.com.

hcltech.com

